




Introduction

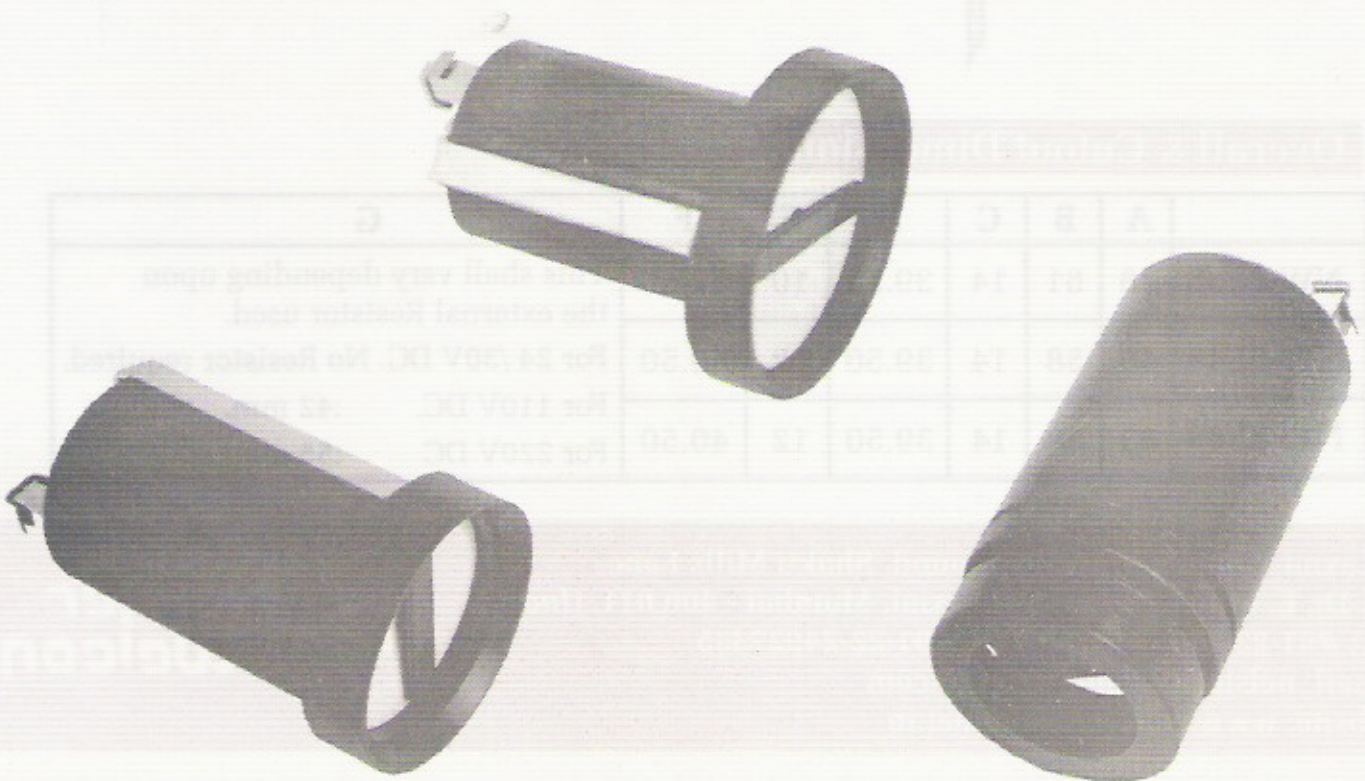
 Semaphore indicators are designed to perform on Instrumentation, Control & Relay Panel's mimic diagram. It indicates the 'open' or 'close' position of the Circuit Breaker, PT ON / OFF switch, Earth Switch, Isolator etc. The Dial Needle Positions itself to right angle with reference to the mimic, when the Isolator, breaker etc. is in 'Open' position. In "Closed" position of the Isolator, Breaker etc, the needle positions itself to bridge the gap between the lines and provide continuity in the mimic diagram. When supply to the Semaphore Indicator fails, the needle moves to occupy the intermediate position at 45°.

Application

For automatic status indication of Isolators, Earth Switches. Circuit Breakers etc. on Mimic diagram of Control Panels.

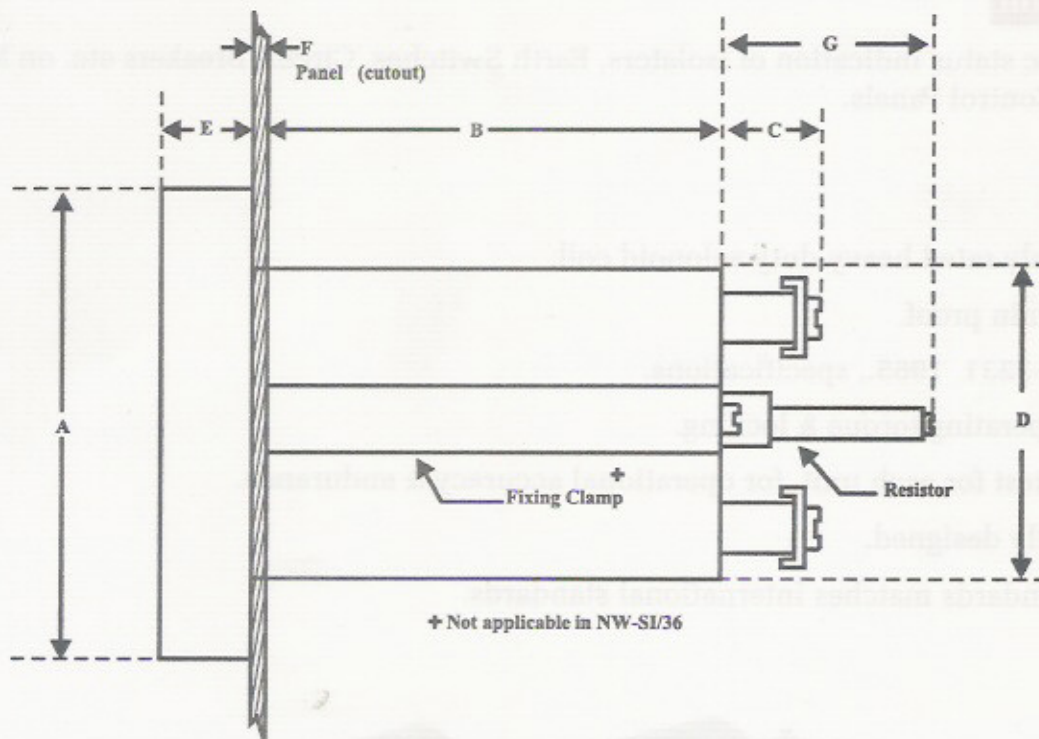
Features

- Continuously rated heavy duty solenoid coil.
- Dust & vermin proof.
- Exceeds IS-3231 1965., specifications.
- Superior operating torque & locking.
- Prolonged test for each unit, for operational accuracy & endurance.
- Aesthetically designed.
- Quality standards matches international standards.



Technical Specifications

- Color : Body Black. Dial White.
- Bazel Size : Dia. 36mm, 48mm & 63mm.
- Rated Voltages : 24V 30V. DC.
 110V DC : Use 3K Ω . 6W external Resistor
 220V 250V. DC : Use 9K Ω . 12W
 external Resistor. Stud type Resistors could be provided, at extra cost.
- Operating Voltages : 60% to 120% of rated voltage .
- Burden : 30 mA
- Terminals : 3 Nos.
- Endurance Test : O. 10 million operations.
- Insulation Test : 2.5 kV rms, 50 Hz for 1 minute between terminals
 and base. 40 M W between base and terminals.
- Bazel Sizes : 36 mm. Our product code : NW-SI/36
 : 48 mm. Our product code : NW-SI/48
 : 63 mm. Our product code : NW-SI/63



Overall & Cutout Dimensions

	A	B	C	D	E	F	G
NW-SI/36	36	61	14	39.50	10	32.50	This shall vary depending upon the external Resistor used. For 24 /30V DC. No Resistor required. For 110V DC. :42 mm. For 220V DC :55 mm.
NW-SI/48	48	58	14	39.50	12	40.50	
NW-SI/63	63	58	14	39.50	12	40.50	

6, Laxmi Woollen Mills Compound, Shakti Mills Lane,
 Off. Dr. E. Moses Road, Mahalaxmi, Mumbai - 400 011. (India)
 Tel.: #91-22-2494 65 64 • Fax: #91-22-24927335
 E-mail: nelsterwelcon@hotmail.com
 Website: www.nelsterwelcon.net.in

**Nelster
 Welcon**